



O son do ar

Bieito Romero (Luar na Lubre)

A Dm C F Dm F

Melodía

Voz 2

Voz 3/Ukelele

Bajo

7 G Am Dm C F

Mel.

V.2

V.3/Uk.

B.

13 Dm Bb C 1. Dm Fine 2. G **B**

Mel.

V.2

V.3/Uk.

B.



19 Dm C Dm C B \flat C

Mel.

V.2

V.3/Uk.

B.

25 Dm Dm C Dm

Mel.

V.2

V.3/Uk.

B.

30 Gm B \flat C 1. Dm 2. G D.C. al Fine

Mel.

V.2

V.3/Uk.

B.



O son do ar

Bieito Romero (Luar na Lubre)

Melodía

Voz 2

A

Dm C F Dm F G

Mel.

V.2

8

Am Dm C F

Mel.

V.2

13

Dm Bb C

1. Dm Fine 2. G

Mel.

V.2

18

B

Dm C Dm C Bb C

Mel.

V.2

25

Dm Dm C Dm

Mel.

V.2

30

Gm Bb C

1. Dm 2. G D.C. al Fine



O son do ar

Bieito Romero (Luar na Lubre)

4

A

Dm

C

F

Dm

F

7

G

Am

Dm

C

12

F

Dm

Bb

C

1. Dm

2. G

Fine

18

B

Dm

C

Dm

C

Bb

C

25

Dm

Dm

C

Dm

30

Gm

Bb

C

1. Dm

2. G

D.C. al Fine



O son do ar

Bieito Romero (Luar na Lubre)

A

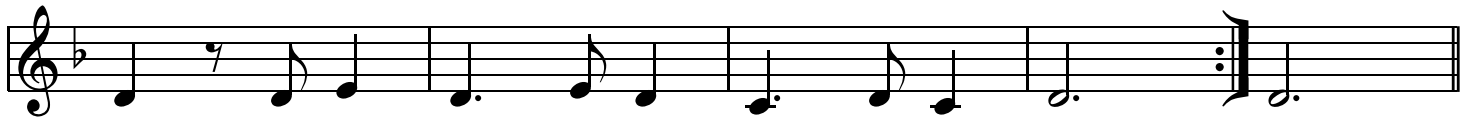


8



13

1. | 2.



18

B



26

1. | 2.



O son do ar

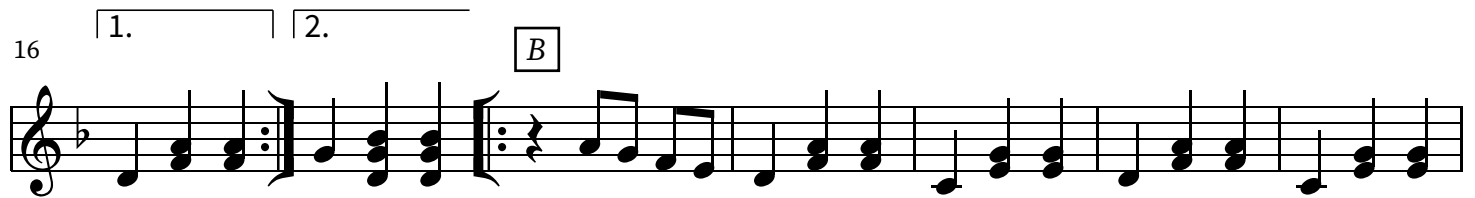
Bieito Romero (Luar na Lubre)



9



16



23



29





O son do ar

Bieito Romero (Luar na Lubre)

Musical notation for the first system (measures 1-9). Chords: A, Dm, C, F, Dm, F, G, Am. Includes a treble clef, a 3/4 time signature, and a key signature of one flat. The notation shows fingerings and fret numbers on the strings.

Musical notation for the second system (measures 10-17). Chords: Dm, C, F, Dm, B♭, C. Includes first and second endings. The notation shows fingerings and fret numbers on the strings.

Musical notation for the third system (measures 18-25). Chords: Dm, C, Dm, C, B♭, C, Dm. Includes a section labeled 'B'. The notation shows fingerings and fret numbers on the strings.

Musical notation for the fourth system (measures 26-29). Chords: Dm, C, Dm. The notation shows fingerings and fret numbers on the strings.

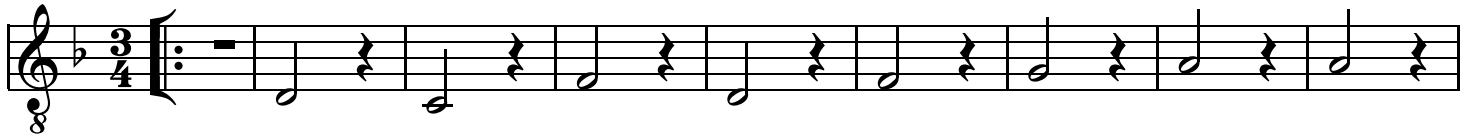
Musical notation for the fifth system (measures 30-37). Chords: Gm, B♭, C, Dm, G. Includes first and second endings. The notation shows fingerings and fret numbers on the strings.



O son do ar

Bieito Romero (Luar na Lubre)

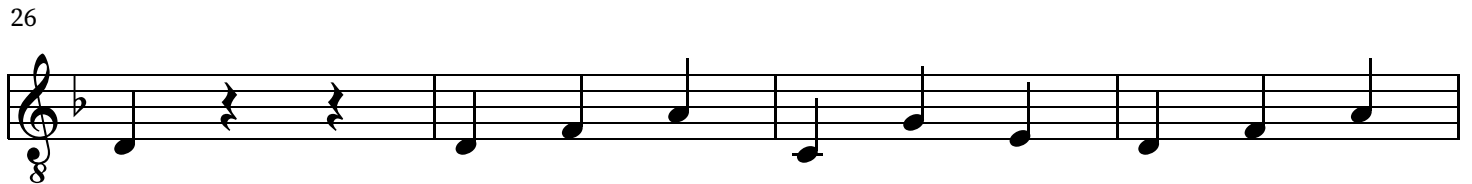
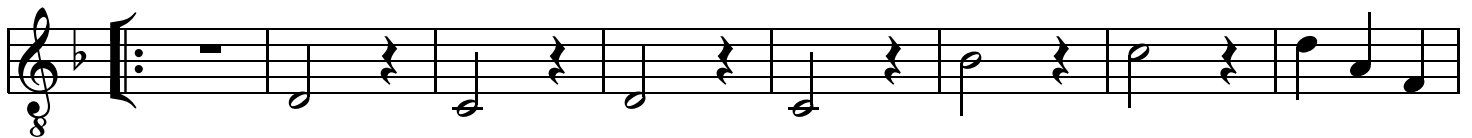
A



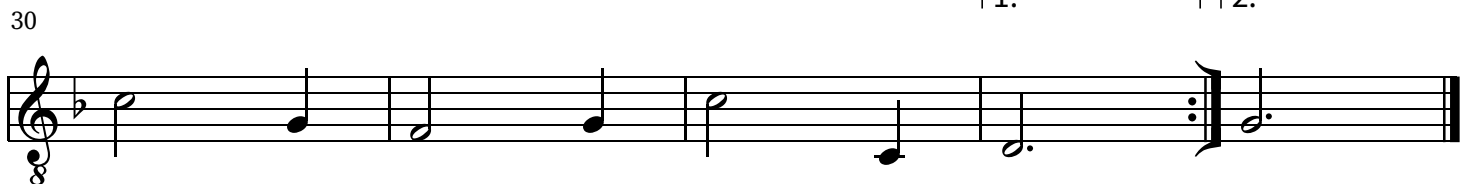
1. 2.



B



1. 2.





O son do ar

Bieito Romero (Luar na Lubre)

8

A Dm C F Dm F G Am

9

Dm C F Dm B \flat C

1. Dm

Fine

17

2. G **B** Dm Am Dm C B \flat C

25

Dm Dm C Dm

30

Gm B \flat C

1. Dm **2.** G

D.C. al Fine